

RIDER

SPOT

GRONINGEN



DE OOSTERPOORT SMALL HALL

DE OOSTERPOORT

Trompsingel 27
9724 DA Groningen
The Netherlands

P.O. Box 775
9700 AT Groningen
The Netherlands

+ 31 (0)50 3680111 or
+ 31 (0)50 3680110

info@spotgroningen.nl
www.spotgroningen.nl

CONTACTS

PROMOTERS

Peter Sikkema
+ 31 (0)50 3680241
+ 31 (0)6 53534531
peter@050music.nl

Joey Ruchtie
+ 31 (0)6 18392198
joey@050music.nl

PRODUCTION

Frederike Cath
+ 31 (0)50 3680247
+ 31 (0)6 27332276
frederike@050music.nl

Arne Lampe
+ 31 (0)6 25071158
arne@050music.nl

TECHNICAL PRODUCTION

(a.o. sound, lights, rigging)

Roelof Buis
+ 31 (0)50 3680216
+ 31 (0)6 20067575
roelofbuis@spotgroningen.nl

BACKSTAGE

DRESSING ROOMS

6 dressing rooms (2 x large + 4 x small). Showers and toilets in corridor next to the dressing rooms (back stage). All dressing rooms are lockable and are furnished with tables, chairs, mirrors, adequate lighting, power outlets, a small fridge and a clothes rack.

PRODUCTION OFFICE

One of the dressing rooms can be used as a production office. Production phone: available on request. Wifi available.

DINNER

There is an in-house restaurant at De Oosterpoort. If you have any questions regarding catering or hospitality, do not hesitate to contact venue's production manager.

WIFI / INTERNET

Free wireless internet available in dressing room area. Network: oosterpoort, password: on request

MERCHANDISE FEE

€ 145,- or shirts for our stage crew.

MERCHANDISE SELLER OR ASSISTANT

€ 65,- (please let us know in advance if you need a seller or assistant).

HOTELS (see page 5)

If you need hotel accommodation, we can assist with your reservation. We have special rates at most hotels in Groningen. Do not hesitate to contact us.

IMPORTANT NOTICES

Please make sure we receive all relevant show information no later than 4 weeks before the day of performance:

- technical rider, including stage plot and patchlist
- lighting plot
- hospitality rider
- backline: we will presume artist will carry all backline unless otherwise agreed
- travel party
- technicians band will bring
- means of transportation

Please contact venue's production manager to advance the show and to discuss the number of crew needed.

Please report any changes regarding get in time a.s.a.p. to venue's production manager, at least 4 days before the day of performance. Extra costs due to changes after this date may be for account of the artist.

The crew of our venue is obliged to work according to the Dutch occupational health and safety regulations determined by the Dutch Labour Inspectorate. We expect you to do the same.

All riders received after aforementioned time span shall be dealt with in the best possible way, without any guarantees as to their fulfillment. All extra costs resulting from this will be charged.

GENERAL INFO

BACKSTAGE ENTRANCE

Palmslag (for map see page 6) parking # 3.

LOADING DOCK / TRUCK & BUS PARKING

Loading dock Palmslag (for map see page 6) parking # 2.

Backstage parking Palmslag (for map see page 6) parking # 3

Backstage parking is locked by a gate, easy entrance. Bus power (230V 16A CEE/32A 3ph. CEE) can be provided on request. If you are planning to arrive overnight, please let us know in advance. There is one loading dock. Access from loading dock level to stage level via open lift (1,20 x 3,00m).

CAPACITY

Small Hall standing: 750 (barrier reduces capacity with 50).

Small Hall seated: 450.

STAGE

Stage size standing shows: 10m x 6m

Theatre/seated shows: 10m x 11m (electrically elevated stage), excluding aisles and wings.

PA Wings:

none, fixed flown in-house PA

Stage height: 1m.

Please note: The Small hall is a theatre style hall, including electric flybars, fixed borders, drapes etc.

Approximately 20 free available flybars for lighting/ backdrops. Max. distributed load per flybar: 250 kg.

Risers/rolling risers (stage decks 2 x 1m) available on request. Please contact us about rigging/hanging possibilities.

STAGE POWER SUPPLY

Lights:

1 x 3 x 125A 3ph + 1 x 3 x 32A 3ph U.S.R. & 1 x 3 x 125A 3ph + 1 x 3 x 63A 3ph D.S.R.

Sound: 2 x 3 x 32A + 1 x 3 x 63A U.S.L. and U.S.R.

Transformers: 230 > 110v: 2 x 1 kW

SOUND LIMIT

Due to sound level restrictions and regulations it is not allowed to exceed the following maximum sound level: Max 103 dBA at the FOH sound desk, Leq 15 minutes. De Oosterpoort reserves the right to reduce the sound level when necessary.

BACKLINE

We will presume artist will carry all backline unless otherwise agreed. In case De Oosterpoort will have to rent backline, we will need specific backline requirements well in advance.

GRAND PIANO

A grand piano (Yamaha C7) can be provided by the venue. Extra costs for tuning will be for account of the artist.

BARRIER

On request only. If artist has specific reason why barriers should be used, please let us know advance. Please note: use of a barrier reduces the capacity with 50. Costs for the barrier and additional security guards will be for account of the artist.

NO SMOKING

Smoking is not allowed.

FIRE PROOF CERTIFICATES AND RESTRICTIONS

There are strict regulations governing the use of pyrotechnical devices, smoke and fire effects on stage. Please contact venue's production manager well in advance if your production involves anything like this. All scenery, back drops etc. must be flameproof and comply with all Dutch fire and safety regulations. The use of any kind of confetti, snow, glitter, foam or bubble machines is not allowed, unless otherwise agreed well in advance. Additional cleaning costs when using confetti/streamers etc. € 250,-

SECURITY

Standard security, no barrier, unless otherwise agreed well in advance. De Oosterpoort strongly requests the artist not to encourage the audience to take part in crowdsurfing. Also for security reasons it is not allowed to invite members of the audience to climb the stage during the show. We expect artists' cooperation in these matters.

RUNNER

On request only, please let us know well in advance. Costs for a runner + van will be € 275,- for account of the artist.

RUNNING ORDER WITH SUPPORT ACT

(t.b.c during the advance with venue's production manager)

Get in: 15.00 h.

Soundcheck main act: 16.30 - 17.30 h.

Soundcheck support act: 17.30 - 18.00 h.

Dinner: 18.00 h.

Doors: 19.00 h.

Showtime support: 20.00 - 20.40 h.

Showtime main act: 21.00 h.

Curfew: 23.30 h.

Early get in (before noon): € 300,-

Early get in (before 14.00 h.): € 125,-

RUNNING ORDER WITHOUT SUPPORT ACT

Soundcheck main act: 16.30 - 18.00 h.

Dinner: 18.00 h.

Doors: 19.30 h.

Showtime main act: 20.30 h.

SOUND & LIGHTING SPECIFICATIONS

Please note: Contact us well in advance (at least 4 weeks before show) if these specs are not sufficient. Some items of our equipment are not always available and therefore optional to use. If you have any questions regarding sound or lights, please contact:

Roelof Buis

+ 31 (0)50 3680216 | + 31 (0) 6 20067575 | roelofbuis@spotgroningen.nl

SOUND SPECIFICATIONS

Sound limit max 103 dBA at the FOH sound desk, leq 15 minutes.

FRONT OF HOUSE

Cabinets Martin Audio (per side)

- Top cluster: 7 x WPC flown
- Infills: 2 x WPM
- Subs: 2 x SX 218

Controls

- Midas ProX
- Klark Teknik DN 9848E

Miscellaneous

- Denon CD player
- ASL intercomsystem (2 ch)
- Tascam CD Recorder

STAGE

Cabinets wedges

- 12 x Martin Audio LE 1500 wedge
- (15" + 2" passive / active)
- 9 x Martin Audio LE 1200 wedge
- (12" + 2" passive / active)

Cabinets sidefills

- 2 x Martin Audio SXP 118 sub + CDD-LIVE 15 top

Cabinets drumfill

- 1 x Martin Audio CSX-LIVE 118 sub

Amps

- 12 ch active Martin Audio LE 1500 / 1200

Controls

- Midas ProX

In-Ears

- 2 x Shure PSM 900 (no earphones)

Microphones

- DPA 2011 C
- Shure SM58 + Beta A
- Shure SM57 + Beta A
- Shure KSM 9
- Shure Beta 52
- Shure Beta 91
- Shure KSM 137
- Shure KSM 27
- AKG 214
- EV RE20
- Neumann KM 140
- Neumann KMS 105
- Neumann TLM 102
- Sennheiser MD 421
- Sennheiser BF 504

DI

- Klark Teknik active DI
- Synco active DI
- Optional: Shure UHFR wireless

LIGHTING SPECIFICATIONS

Also see pdf files

- Lighting plot
- Patch list
- Kaplijst (theatre)

Fixed lighting fixtures

- 8 x Clay Paky Scenius Spot
- 8 x A.Leda B-Eye K10
- 4 x A.Leda B-Eye K10 CC
- generics as per plot

Other fixtures

- 4 x 4Lites DWE blinders
- 4 x Martin Atomic LED strobes
- 4 x Clay Paky Scenius Spot
- 4 x A.Leda B-Eye K10
- PAR 64 MFL 1kW on sixbar/ fourbar/ individual
- PAR 64 MFL CP88 500W floorcans
- ADB PC spots 1kW and 2 kW
- Niethammer 1Kw zoom profiles
- 1 x MDG ATMe hazer

Controls / network

- GrandMA 2 Light plus fader wing
- Avolites Arena
- 2 x CAT 5 lines (Ethercon) between F.O.H. and stage right, one in use for house ArtNet network
- 3 universes of DMX on 5-pin from F.O.H. to stage right

Power / dimming

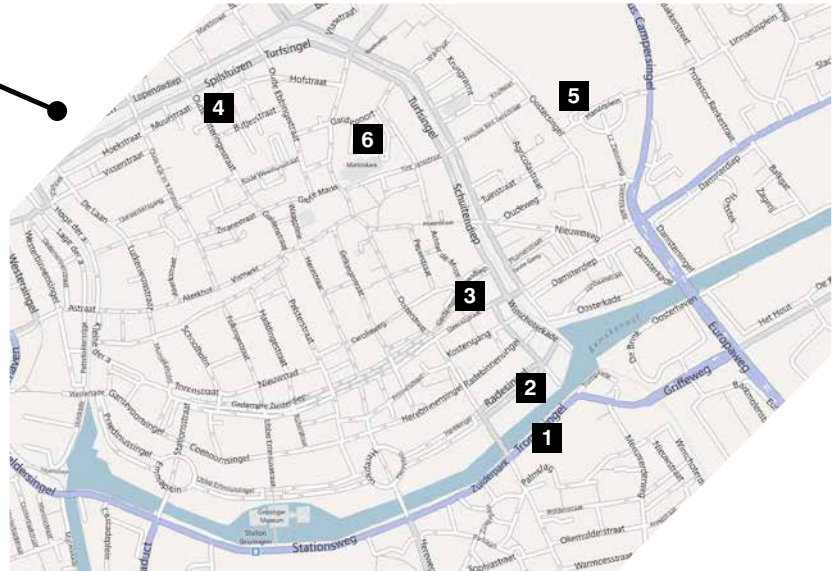
- 1 x 125A 3ph. CEE at stage right
- 1 x 63A 3ph. CEE at stage right
- 1 x 32A 3ph. CEE at stage right
- Free dimmers: 36 x 3.7 kW

Other

- all gels are Lee
- all gobos are A-size
- all 230V connectors are Schuko
- all DMX is 5-pin
- all network cabling (RJ45) on Ethercon

HOTELS

SPOT GRONINGEN



1 SPOT/DE OOSTERPOORT

Trompsingel 27, 9724 DA
+31 (0)50 36 80 110

2 BEST WESTERN HOTEL GRONINGEN CENTRE

Radesingel 50, 9711 EK
+31 (0)50 31 62 900
hotelgroningencentre.nl

3 CITY HOTEL GRONINGEN

Gedempte Kattendiep 25, 9711 PM
+31 (0)50 588 65 65
cityhotelgroningen.com

4 NH HOTEL DE VILLE

Oude Boteringestraat 43, 9712 GD
+31 (0)50 31 81 222
nh-hotels.com

5 NH HOTEL

Hanzeplein 132, 9713 GW
+31 (0)50 58 48 181
nh-hotels.com

6 HOTEL PRINSENHOF

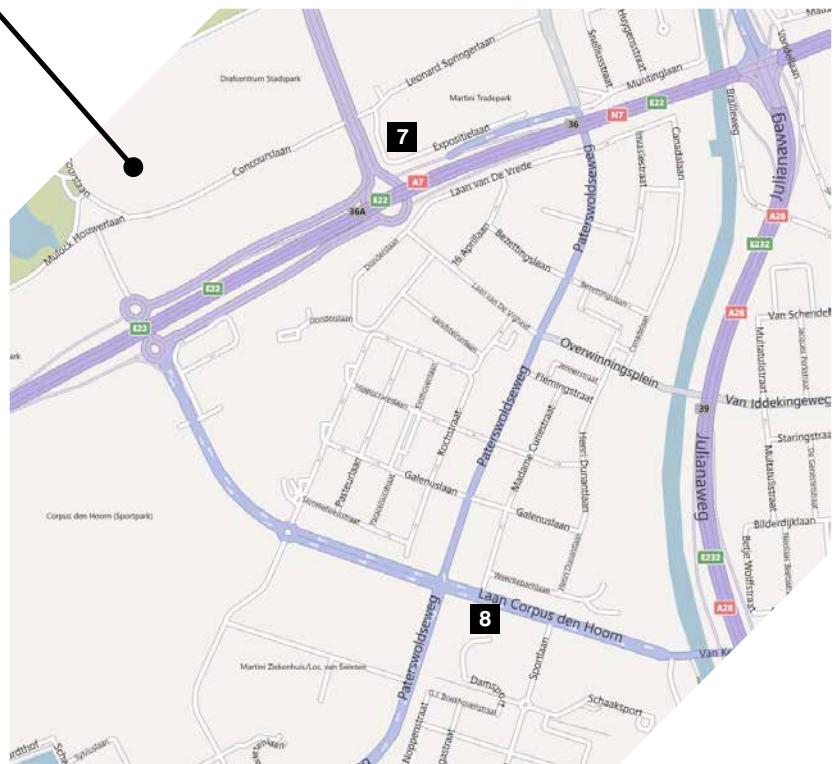
Martinikerhof 23, 9712 JH
+ 31(0)50 3176555
prinsenhof-groningen.nl

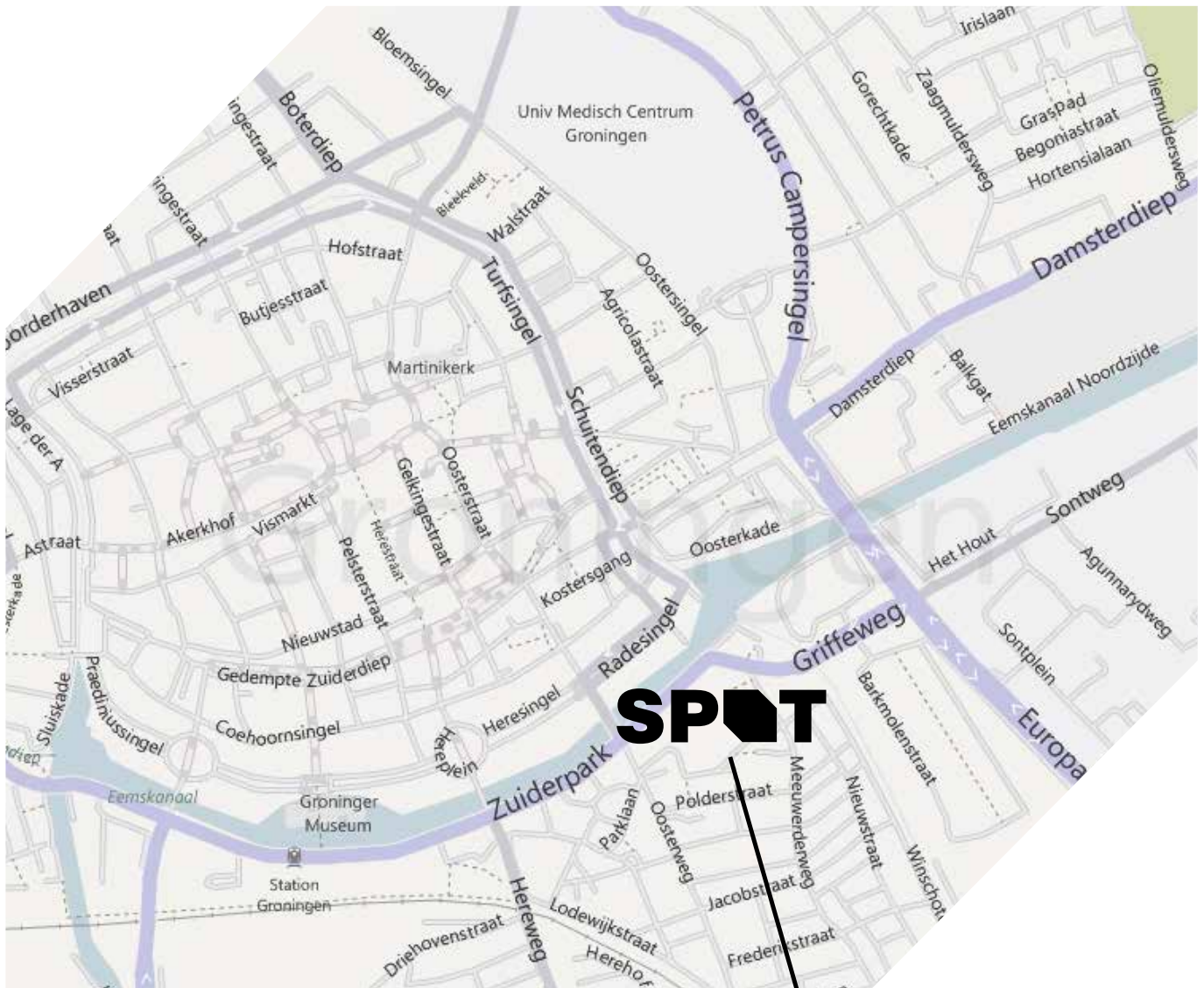
7 MERCURE HOTEL

Expositielaan 7, 9727 KA
+31 (0)50 525 84 00
mercure.com

8 BEST WESTERN PLUS HOTEL GRONINGEN PLAZA

Laan Corpus den Hoorn 300, 9728 JT
+31 (0)50 524 80 00
hotelgroningenplaza.nl





- 1** PARKING AND LOADING DOCK MAIN HALL (GROTE ZAAL)
- 2** LOADING DOCK SMALL HALL (KLEINE ZAAL)
- 3** PARKING SMALL HALL PALMSLAG

